



*powering your data*

# Paygle Connect

Paygle was formed in 2012 by the CFO of a large tech firm and an IT systems architect. They identified that despite there being multiple technology platforms in many supply chains, most did not talk to each other efficiently. Companies were still spending significant time handling invoice documents, charges, billing information and operational data day in day out.

Since 2017 Paygle has collaborated with TMC's, Payment Providers and Expense Systems to solve customer problems and increase efficiency. Working together we streamline an often heavily manual process into a customer specific automated solution.

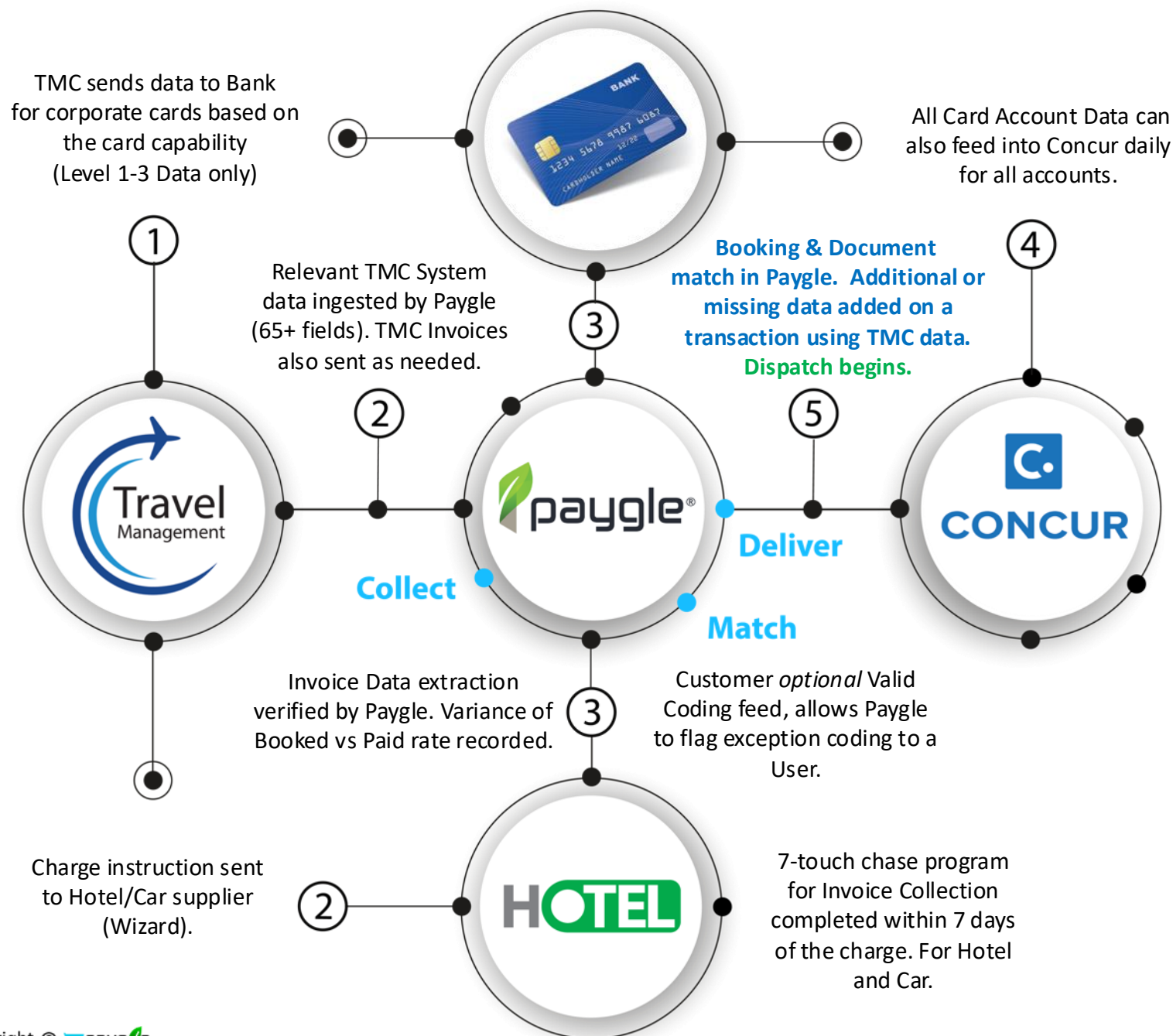
Regardless of the payment method, expense or accounting set up, Paygle's automated reconciliation solutions can integrate into your technology environment.

Currently, Paygle is heavily involved in the Travel and Automotive industry, however the Platform is agnostic as accounting practices are common across almost all business verticals.



# Concur API Workflow

## 98%+ Deliver Success



### Paygle Concur Dispatch Capability Summary.

- 1 Paygle can deliver any invoice 'e-receipt' to a traveller, booker, central or departmental user location.
- 2 Paygle can 'fall back' to a booker or central user location if the traveller is not an active user.
- 3 Paygle can code expense entry reference fields using any of the TMC or Invoice data points.
- 4 Paygle can code invoice spend breakdown into the Itemization area of an expense entry.
- 5 Automatic 5-point retry ensures any Concur API failure is overcome through automatic re send attempts.
- 6 Every item is visible in Paygle with the dispatch success response visible for every item sent.

*Paygle can also create expense entries with matched e-receipts within Concur on behalf of a customer.*





**Paygle Connected Providers**



**FCM**



**ctm**



**connections group**



## ***Our Performance Expectations***

95%+ Invoice Collection rate

Matched to charge within 7 days

98%+ Document Extraction accuracy

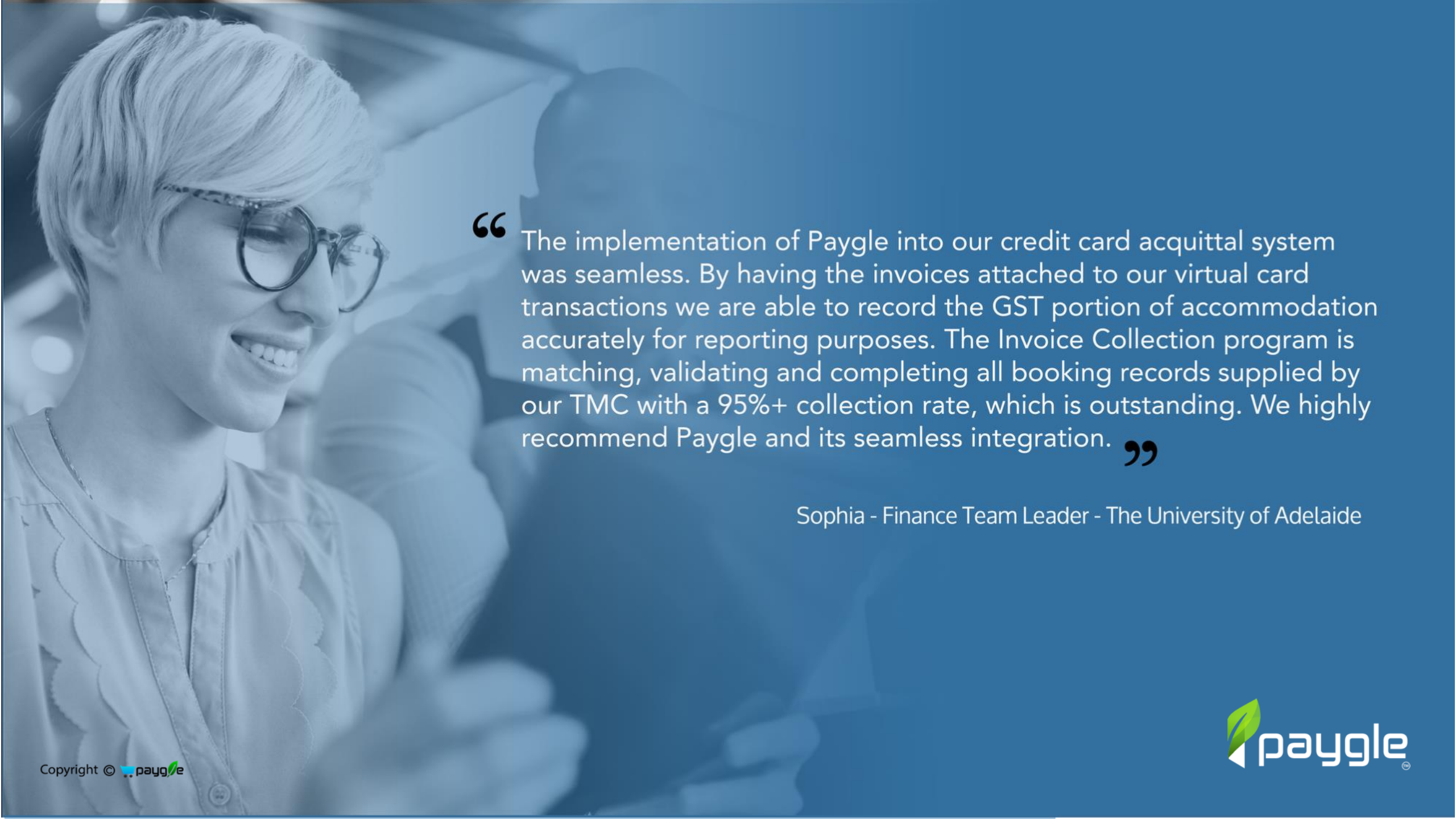
95%+ Match and Delivery complete

## ***Pricing***

Paygle can Collect, Extract, Match and Deliver

.....for as little as \$2 an invoice





“ The implementation of Paygle into our credit card acquittal system was seamless. By having the invoices attached to our virtual card transactions we are able to record the GST portion of accommodation accurately for reporting purposes. The Invoice Collection program is matching, validating and completing all booking records supplied by our TMC with a 95%+ collection rate, which is outstanding. We highly recommend Paygle and its seamless integration. ”

Sophia - Finance Team Leader - The University of Adelaide



## *Get in touch*



+61 (0)420 282 477



enquiries@paygle.com



www.paygle.com

